

PowerLite® D6000 Series

PowerLite D6150

PowerLite D6155W

PowerLite D6250



Better Products for a Better Future™

For more information on Epson's environmental programs, go to eco.epson.com

Epson America, Inc.
3840 Kilroy Airport Way, Long Beach, CA 90806

Epson Canada Limited
185 Renfrew Drive, Markham, Ontario L3R 6G3

www.epson.com
www.epson.ca

- 1 Data source: ProjectorCentral.com, Jan. 2011. Average of 1038 shipping models for which the manufacturers provided lumens and total power data, all resolutions and brightness levels.
- 2 Color and white light output will vary depending on mode selected. White light output measured using ISO 21118 standard.
- 3 Lamp life will vary depending upon mode selected, environmental conditions and usage. Lamp brightness decreases over time.
- 4 Recommendation based on normal room conditions. Cleaning requirements may vary depending on use, environment and other conditions. Cleaning intervals may be adjusted to accommodate the environment in which the projector is used.
- 5 Tested with JIS Z 8901 Type 8 Dust (size: 6.6-8.6 micrometers, density: 2.9-3.1g/cm3) with wind speed = 0.25m/sec.

Specifications and terms are subject to change without notice. Epson, EasyMP, E-TORL and Quick Corner are registered trademarks, Epson Exceed Your Vision is a registered logomark and Better Products for a Better Future is a trademark of Seiko Epson Corporation. PowerLite is a registered trademark of Epson America, Inc. All other product and brand names are trademarks and/or registered trademarks of their respective companies. Epson disclaims any and all rights in these marks. Copyright 2011 Epson America, Inc. CPD-34201 3/11

Robust Performance

Cutting-edge Technology

Low Cost of Ownership





PowerLite D6000 series projectors

Dust-resistant design meets cutting-edge technology.

Engineered with a robust, dust-resistant design, featuring advanced technology and networking capabilities, the Epson D6000 series is the perfect solution for higher education lecture halls and corporate conference rooms alike. With its unprecedented exhaust vent shutter, cable locks and long filter/lamp life, the D6000 series gives you added peace of mind. Cutting-edge technology such as the split-screen function, HDMI input and advanced networking features make your investment a future-proof one.

The best-selling projectors in the world.

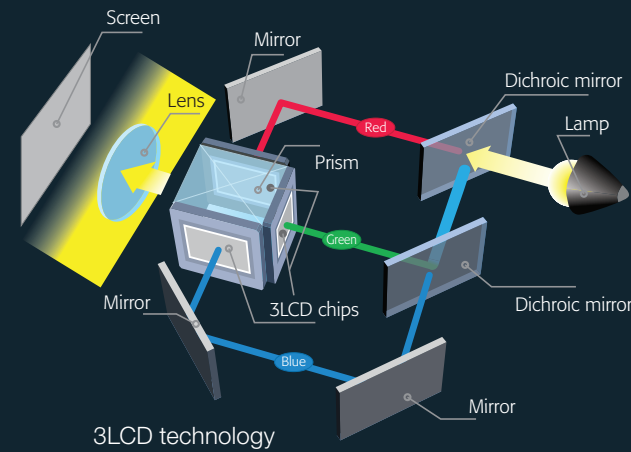
Epson understands business and education and has a solution no matter what your situation. Built with image quality and reliability in mind, Epson projectors enhance communication and inspire collaboration, while offering a low total cost of ownership. From long-throw projectors to ultra-short-throw and all-in-one solutions, Epson has the model made for you.



Brilliant image quality

3LCD technology — for quality and color that's beyond amazing

- 3 chips for full-time, vibrant color
- 25% less electricity required per lumen of brightness when compared to 1-chip DLP projectors¹
- Over 20 years of road-tested reliability built into every projector



Amazing color and white light output

The PowerLite D6150/6155W delivers 3500 lumens of color light output and 3500 lumens of white light output²; the PowerLite D6250 delivers 4000 lumens of color light output and 4000 lumens of white light output² for true-to-life, vibrant, colorful images. For today's color-rich, multimedia content, users want a projector that delivers both optimum white and color imagery. That's why the industry has developed a new metric called Color Light Output.



Award-winning Faroudja DCDi® Cinema for advanced video quality

Faroudja DCDi Cinema is a video enhancement technology, used primarily for film viewing, that produces exceptional image quality without introducing artifacts. Faroudja developed DCDi (Directional Correlational Deinterlacing) to eliminate jaggy images by using a unique algorithm. This algorithm, in combination with the technology's decoding, deinterlacing and enhancement features, won an Emmy Award from the National Academy of Television Arts and Sciences in 2001.



Color light output

Always look for Color Light Output when choosing a projector.

- For optimum image quality and performance, the projector you choose should offer equal levels of color and white light output
- When the two measurements are not identical, images do not look balanced. Whites may be brighter, making the colored areas look dull and flat
- The combination of color richness (Color Light Output) and brightness (White Light Output) is as critical as the combination of bass and treble would be when purchasing audio equipment



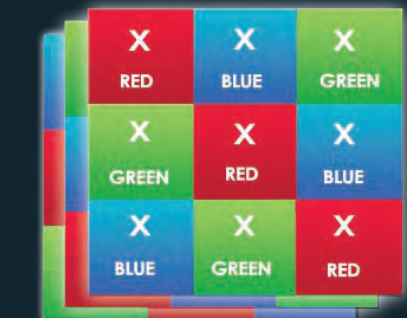
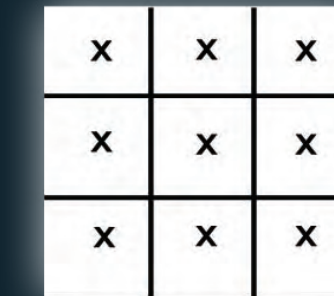
When color and white light output are equal or balanced, colors are authentic and vibrant.



When white light output is greater than color light output, images may appear duller.

How is CLO measured?

The Color Light Output spec measures Red, Green and Blue, each on a 9-point grid, applying the same method used in the ISO 21118 standard for measuring White Light Output.



Brightness (or White Light Output) measures the total amount of white light projected in lumens on a 9-point grid. It does not measure color.

Color Light Output uses 3 sets of a 9-point grid to measure the primary colors — red, green and blue, using the same approach used to measure White Light Output, in lumens.

Robust design

Dust-resistant design

The PowerLite D6000 series features an innovative design with a glass cover in front of the lens and enhanced dust-resistance around the lens levers, offering added protection against dust and reduced maintenance costs. It also features exhaust vent shutters for protection against dust or bugs when not in use. In addition, a cable cover is included to protect the cables and prevent anyone from tampering with them.



1 World's first vent shutter

Projectors typically don't have exhaust vent shutters, so dust and bugs can enter into the projector, reducing the life of the equipment. With the D6000 series vent shutter, your projector is protected.



2 Cable cover

The D6000 series protects connectors from dust and other harmful elements with its convenient cable cover. And, it provides a sleek, finished look by hiding unsightly cables.



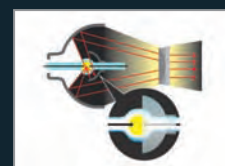
3 Two cable locks

For added security, the D6000 series includes two cable locks that allow you to secure the power and HDMI cables to the projector, thereby preventing others from tampering with the equipment.



4 Long-life E-TORL® lamp

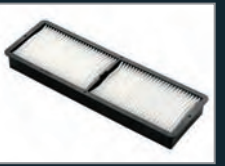
The innovative E-TORL lamp lasts up to 6000 hours.³ The special E-TORL design minimizes both light diffraction and light leakage, providing you the ultimate in lamp longevity.



▲ Dimension without cable cover

5 10000-hour high-efficiency filter

This high-efficiency filter was designed to protect the optical engine, lamp and electronics from small dust particles that can enter any projector. It has a recommended 10000-hour filter cleaning schedule⁴ and can capture 99.5%⁵ of dust particles, thanks to its electrostatically charged, pleated, expanded design.



6 Covered lens

The glass cover in front of the lens protects it from being broken and from dust and other elements.



7 Lens lever cover with seal

Offering added protection from harmful elements, the D6000 series offers a unique design, with no gaps around the focus and zoom levers.

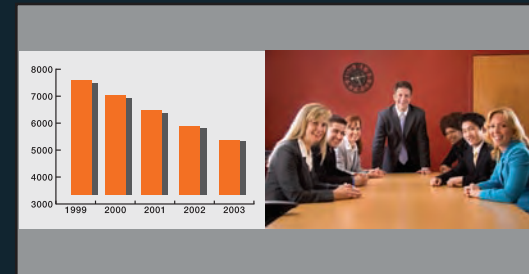


Cutting-edge technology

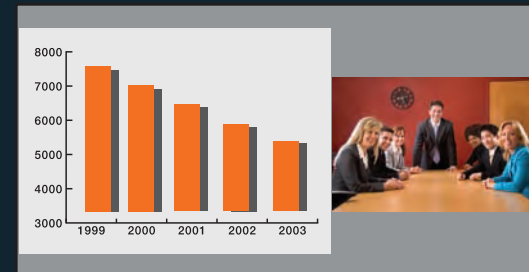


Split-screen feature*

Project two images (video or still) side-by-side from two different sources simultaneously. Choose from three layout options including a 50/50% split-screen, a layout with the main image on the left and a layout with the main image on the right. You can swap the images, choose the source for the audio and even display closed captioning if the source signal includes it.



Layout Option 1:
50/50% split-screen



Layout Option 2:
Main image on the left

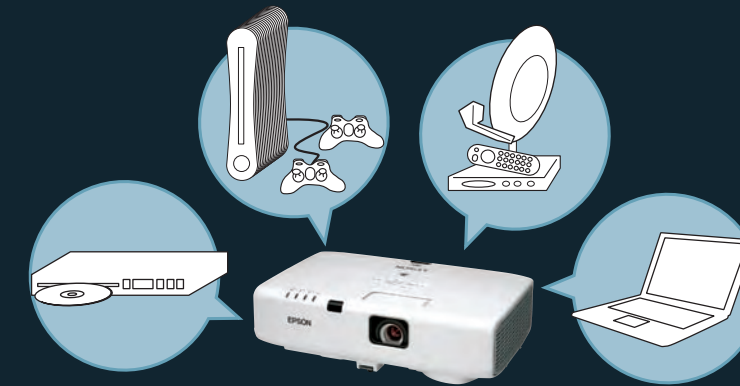


Layout Option 3:
Main image on the right

*One of the inputs needs to be either HDMI or DVI-D.

HDMI input for high-definition video and audio

- HDMI digital connectivity — delivers both audio and brilliant HD video content with just one cable
- Compatible with the latest laptops, Blu-ray® and media players
- Future-proof for digital content



PC-free slideshow

- Just plug your USB drive into the USB port, and you are ready to display your images
- Compatible with the following file formats: JPG/BMP/GIF/PNG
- Create a slideshow using files on the USB drive

Optional wireless connectivity with 802.11n

- Quickly connect to a wireless infrastructure (network) via a wireless LAN module
- Make wireless presentations with an ad hoc (peer-to-peer) wireless connection using the Quick Connect Wireless USB key



Document camera option

Partner your projector directly with an Epson DC-06 document camera. You can simply connect it through your projector's USB port (Type A) and start making more effective presentations and lessons without needing a computer.



Low cost of ownership



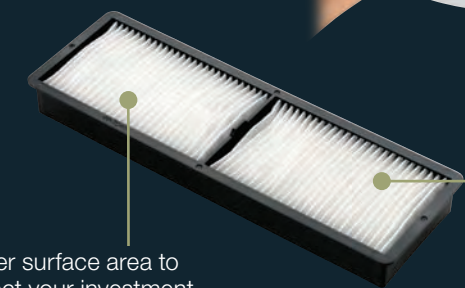
Long-life lamp that's easy to replace

This high-efficiency lamp lasts up to 4000 hours in Normal Mode and up to 6000 hours in ECO Mode.³ It can be replaced quickly and easily, without having to uninstall the projector from the ceiling.



Long-life electrostatic air filter

This innovative filter was designed to protect the optical engine, lamp and electronics from small dust particles that can enter any projector. It has a recommended 10000-hour filter cleaning schedule⁴ and can capture particles as small as three microns, due in part to its pleated, expanded design.



Larger surface area to protect your investment

The electrostatic filter is highly efficient at minimizing dust and also very durable. It captures dust particles down to the three-micron level.

Built-in 5 W speaker

- For multimedia applications — to engage your audience

Built-in closed captioning



- Accommodates those with hearing impairments
- Delivers important content when audio broadcasting is not preferred
- Helps save money — no need to pay for an additional decoder and its installation
- Effective and easy to use — easily enabled or disabled through the projector remote or menu



>>> Phase one projected to be early.

Advanced control, monitoring and communication



Epson's EasyMP® Monitor tool

If you are searching for a solution that gives you control over your time, Epson network projectors with EasyMP Monitor capabilities can help. Epson network projectors contain built-in remote access, with no licensing fees added, to Epson monitor software. These features also give you added control, and the ability to troubleshoot and monitor all Epson network projectors from any computer over a wired or wireless Ethernet network.

Additional features to assist administrators/help desk

- Remote access and control through the network
- Remote monitoring of up to 1024 Epson networked projectors
- View status, including input sources, power on/off, lamp life hours and more
- Preventative maintenance features including temperature levels and error alerts
- Schedule filter and lamp timer settings
- E-mail notification (SMTP) to send alerts to your handheld device
- Enterprise SNMP plug-in available

Network projection — content over IP

You can use EasyMP Network Projection to project your computer screen through the projector, via a network, for effective meetings, presentations and digital signage applications. You can use either wired or high-security wireless LAN connections and project the same or up to four different images on up to four projectors, or display a panoramic image.



Full networkability

Epson network projectors can also be accessed from your browser via an internal web page. Whether you assign a static IP address or enable DHCP, the projector becomes accessible once it's integrated in your network. The internal web page lets you control items such as network configuration, projector settings and e-mail alerts.



Message broadcasting

This innovative feature enables you to broadcast customized images/alerts over the network for announcements or instructions. Messages can be sent to up to 1024 projectors simultaneously and will overwrite the current screen content if the projector is being used, unless this function is disabled by the presenter. If the projector is off, message broadcasting will turn the projector on and then display the message.



Easy and flexible installation

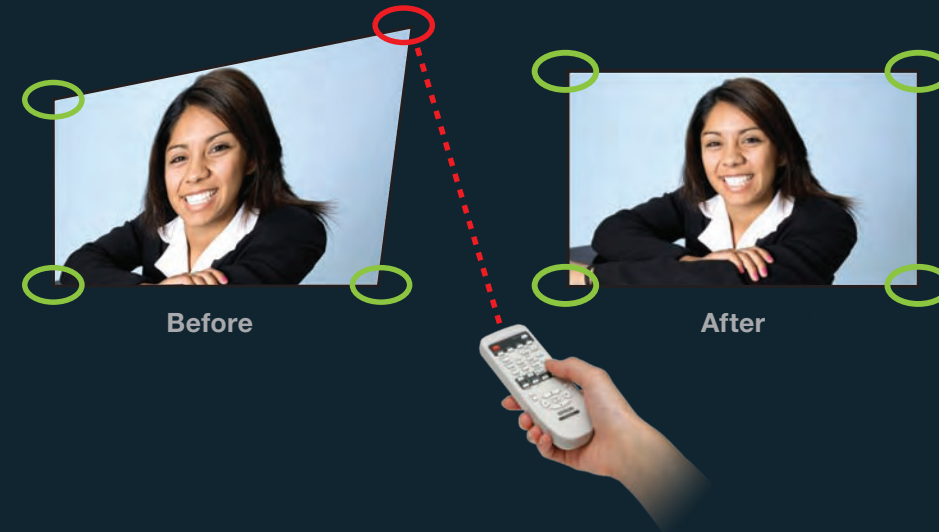


THE COLOSSEUM

- Construction began in 72 A.D.
- Used for mock battles and celebrations
- Held 50,000 spectators
- Arcades framed by Tuscan, Ionic and Corinthian columns

Quick Corner®

Fits the image to your screen perfectly. You can move any of the four corners of an image independently at setup, using the remote control to adjust each corner for a perfectly rectangular picture.

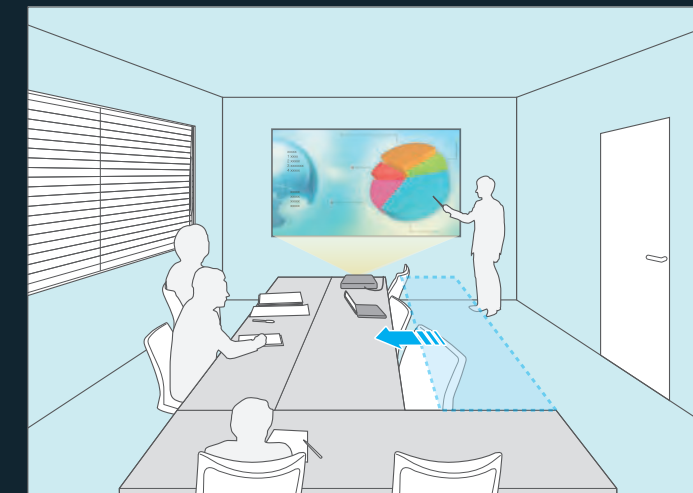


1.6x optical zoom

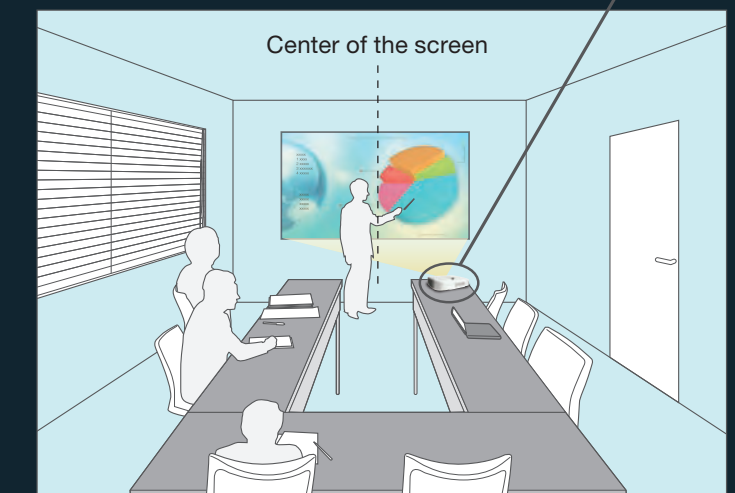
- Enlarge images 40% more than competitive models that have a 1.2x optical zoom
- Maximizes space by enabling closer positioning of the projector to the screen

Innovative horizontal keystone correction

- New, innovative horizontal keystone allows for unique positioning of the projector
- Horizontal (+/- 30 degrees) keystone correction for the ultimate in positioning flexibility
- Project images from a u-shaped tabletop, without having to move the table or put a stand in the center
- When the projector is placed off-center, the presenter can stand in front of the screen without blocking the image



Without horizontal keystone



With horizontal keystone

Create perfectly rectangular images even if your projector is positioned off-center.



Product details and accessories



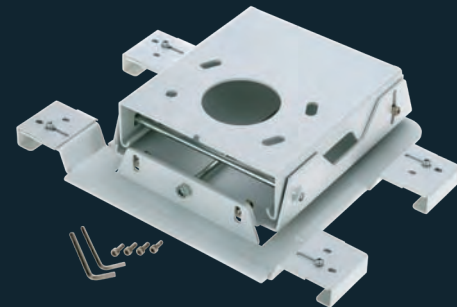
D6150/D6155W/D6250
(Top view with cable cover)



D6155W
(Product shown with lens)



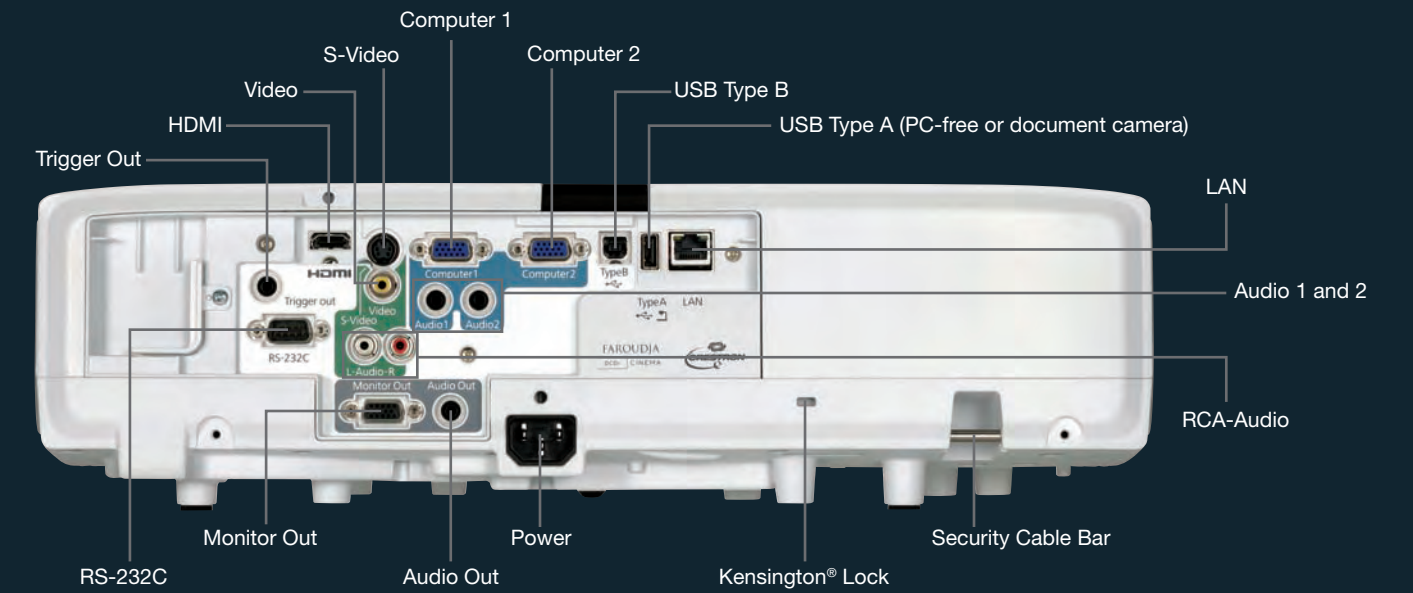
Remote Control



Flush Mount



Extended Pipe Mount



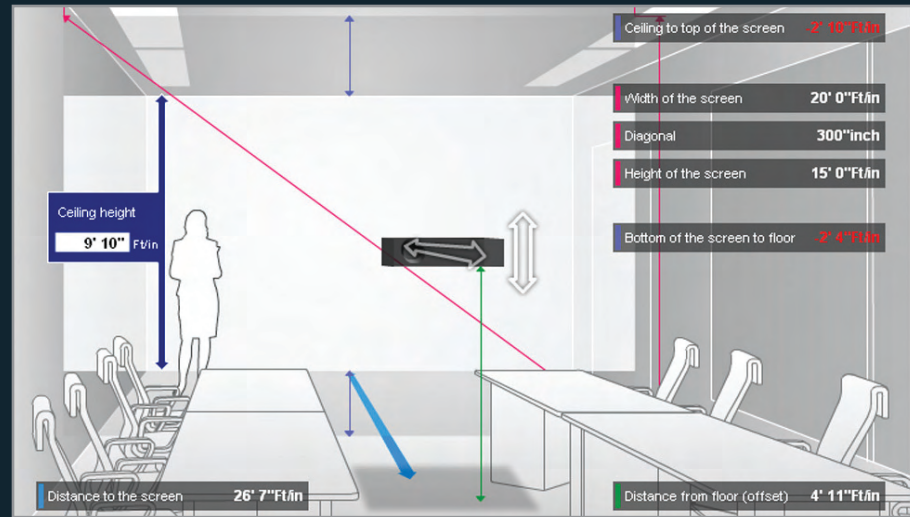
D6250 (Back view)

Epson installation tools

Epson knows that choosing, installing and using a projection device correctly is very important. We have collected helpful tips and resources to make the process easier.

Throw Distance Calculator

Use the throw distance calculator to determine which projector is right for your room size.



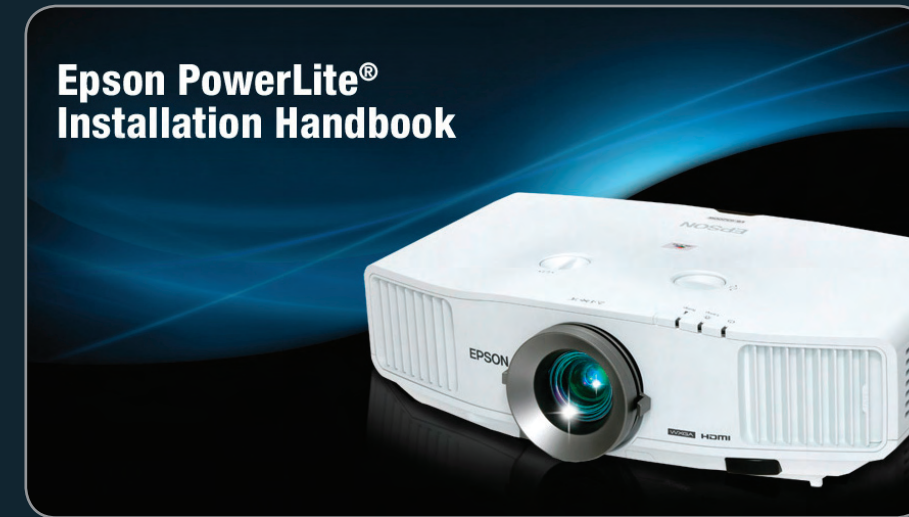
You can interactively change the following attributes and find the right projector solution for your application:

- Projector model
- Lens type (if applicable)
- Lens shift (if applicable)
- Projection distance
- Screen size
- Screen positioning on the wall
- Aspect ratio

Visit epson.com for additional information on documentation and installation tools.

Online Installation Handbook

Find a step-by-step guide to help with the most challenging installation situations.



- Throw distance calculations
- CAD drawings
- Mounting information
- Connectivity information
- RS-232 control codes
- Remote control information
- Environmental requirements
- Maintenance information
- Optional accessories

Epson product specifications

Model	PowerLite D6150	PowerLite D6155W	PowerLite D6250
Part Number	V11H395020	V11H396020	V11H397020
Genuine Epson Lamp	V13H010L61	V13H010L64	V13H010L64
Replacement Air Filter	V13H134A30	V13H134A30	V13H134A30
Native Resolution	1024 x 768 (XGA)	1280 x 800 (WXGA)	1024 x 768 (XGA)
Color and White Light Output ² (ISO 21118 standard)	3500 lumens	3500 lumens	4000 lumens
Contrast Ratio (High Brightness, Dynamic Mode)	2000:1	2000:1	2000:1
Lamp Type	230 W UHE	275 W UHE	275 W UHE
Keystone Correction	Vertical: ±30 degrees Horizontal: ±30 degrees	Vertical: ±30 degrees Horizontal: ±30 degrees	Vertical: ±30 degrees Horizontal: ±30 degrees
Power Consumption	328 W (Normal Mode), 242 W (ECO Mode)	395 W (Normal Mode), 322 W (ECO Mode)	395 W (Normal Mode), 322 W (ECO Mode)
Fan Noise	39 dB (Normal Mode), 33 dB (ECO Mode)	39 dB (Normal Mode), 33 dB (ECO Mode)	39 dB (Normal Mode), 33 dB (ECO Mode)
Aspect Ratio	4:3	16:10	4:3
Size (projection distance)	30" – 300"	29" – 280"	30" – 300"
Lamp Life ³	4000 hours (Normal Mode), 6000 hours (ECO Mode)	3000 hours (Normal Mode), 4000 hours (ECO Mode)	3000 hours (Normal Mode), 4000 hours (ECO Mode)
Interfaces	HDMI x 1 Computer: D-sub 15 pin x 2 Monitor-out: D-sub 15 pin x 1 Video: RCA x 1 S-Video x 1 Network: RJ-45 x 1, 100 Mbps Wireless LAN: Optional 802.11 a/b/g/n Serial: RS-232c USB: Type-A x 1, Type-B x 1 Audio-in: Mini stereo x 2 Audio-in: RCA (L and R) Audio out: Mini stereo x 1 Trigger out: 3.5 mm x 1	HDMI x 1 Computer: D-sub 15 pin x 2 Monitor-out: D-sub 15 pin x 1 Video: RCA x 1 S-Video x 1 Network: RJ-45 x 1, 100 Mbps Wireless LAN: Optional 802.11 a/b/g/n Serial: RS-232c USB: Type-A x 1, Type-B x 1 Audio-in: Mini stereo x 2 Audio-in: RCA (L and R) Audio out: Mini stereo x 1 Trigger out: 3.5 mm x 1	HDMI x 1 Computer: D-sub 15 pin x 2 Monitor-out: D-sub 15 pin x 1 Video: RCA x 1 S-Video x 1 Network: RJ-45 x 1, 100 Mbps Wireless LAN: Optional 802.11 a/b/g/n Serial: RS-232c USB: Type-A x 1, Type-B x 1 Audio-in: Mini stereo x 2 Audio-in: RCA (L and R) Audio out: Mini stereo x 1 Trigger out: 3.5 mm x 1
Projection System	Epson 3LCD, 3-chip technology		
Projection Method	Front/rear/ceiling mount		
Color Reproduction	16.7 million		
Pixel Clock	13.5 – 162 MHz (up to UXGA 60 Hz)		
Horizontal Frequency	15 kHz – 92 kHz		
Vertical Frequency	50 Hz – 85 Hz		