

Showcase Series™ HT410™ and HT510™



Home Entertainment Projector

vivid.

Built upon a legacy of superior commercial products, the NEC Showcase Series brings this quality into your home.

- **HD (1080i, 720p) and SD (576p, 480p).** Signal compatibility for the best video quality
- **High resolution.** 854x480 (HT410) and 1024x576 (HT510) pixel displays
- **Deinterlace video processing.** Circuitry detects frame rate and then selects the proper processing to reduce line flicker and jaggies in video
- **Picture management.** Multiple adjustments enable for personalized modifications to fine tune image display
- **Video noise reduction.** Specialized circuitry assists in filtering video noise in VHS, cable and satellite sources
- **Project on almost any color wall.** Preset selections provide for adaptive color tone correction when projecting onto a non-white screen material or walls
- **Real life colors.** VORTEX Technology Plus™ breakthrough image processing technology improves white balance, color accuracy, dynamic range and varying levels of black in an image
- **Commanding video.** High brightness and contrast for enjoyable viewing in most environments

adaptable.

Portable entertainment that adapts to virtually any room in your home.

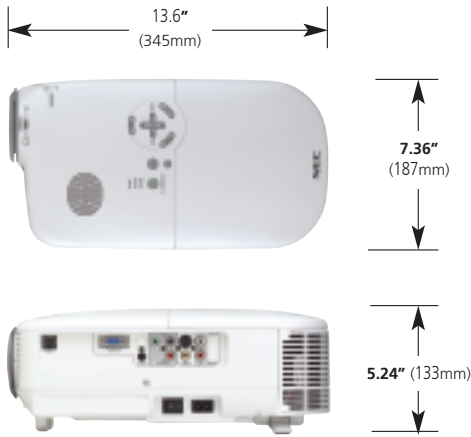
- **Flexible.** Unique adjustable tilt rear foot for enhanced projector placement and alignment to the screen
- **Intuitive.** Autosense™ automatically syncs the projector with source signals and features one-touch image optimization
- **Always in line.** Manual vertical lens shift assists in projector to screen picture alignment
- **Quiet operation.** Nearly silent at <26dB in Eco-Mode
- **Multiple hookups.** 3 video inputs – 1 component, 1 S-Video and 1 video for multiple video source hook up
- **Easy to navigate.** Full function back lit remote puts common features at the touch of a button
- **Various displays.** Show popular wide screen and full screen aspect ratios - 16:9, 1.85:1, 2.35:1 and 4:3

reliable.

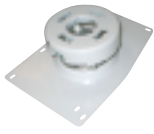
Professional grade reliability and performance – NEC was a founder of the display industry nearly 25 years ago and builds rock solid projectors.

- **Extended lamp life.** Eco-Mode™ technology increases lamp life by up to 50%
- **Long lasting lamp.** Up to 3000 hours in Eco-Mode and up to 2000 hours in normal mode
- **Warranty.** Backed by 2 years limited parts and labor warranty coverage including RepairCare™

Showcase Series HT410 and HT510



Accessories



MOUNT



REMOTE



LAMP

Additional Features

High Definition Compatibility	Signal compatibility with HD (1080i, 720p) and SD (576p, 480p) inputs for the best video quality
Quiet Operation	With whisper quiet noise levels at less than 26dB, you won't be straining to hear and enjoy the DVD, show or video game
Vertical Lens Shift	Manual vertical lens shift enables the adjustment of the image up or down to optimize the image for the height of the screen
Eco-Mode™	Increase lamp life through light output adjustments
Integrated Deinterlace	I/P video processing circuitry enables deinterlacing and 3:2 and 2:2 pulldown correction reducing line flicker and jaggies in video
Built in Wall Color Correction	Preset selections provide for adaptive color tone correction when projecting onto a non-white screen material or wall
Noise Reduction	Assists in filtering noise in VHS, cable and satellite sources circuitry
Picture Management	Extensive picture management adjustments enable detailed color, gamma and color temperature adjustments to fine tune image display.
Adjustable Rear Foot	The unique adjustable rear foot provides the projector with a horizontal tilt adjustment. If the projector is placed on an uneven surface, keep the projector level by pushing down the left or right rear part of the top cabinet with both hands.
Full Screen Display	Whether using a 16:9 or 4:3 screen, fill the display area even when using non native source material and eliminate black bar display
VORTEX Technology Plus™	Provides uncompromising display of video and data. Improves white level, color accuracy, dynamic range, and display of varying levels of black in an image. Color correction system enables six-axis adjustment of CMY and RGB for display of personal color preferences
AutoSense™	Automatic set-up and one touch adjustments for ease of use

Optical

Panel	HT410: 0.5" Single chip 16:9 native Darkchip2 DMD HT510: 0.6" Single chip 16:9 native Darkchip2 DMD
Color Wheel	5 segment
Aspect Ratio/Resolution	HT410: 16:9, 854x480 Wide Screen, (480p) HT510: 16:9, 1024x576 Wide Screen, (576p) Maximum computer resolution: SXGA+ (1400x1050) 4:3 displayed inside 16:9 area
Lens	Manual zoom, Manual focus F=2.0-2.48, f=19.5-23.0 mm
Lens Shift	Manual, Vertical
Throw ratio	HT410: 1.63-1.94 HT510: 1.35-1.61
Light Output (ANSI, typical)	1000 normal, 800 eco-mode
Lamp	155W NSH – normal 124W NSH – eco-mode
Lamp Life (up to)	Eco-mode – 3000H; Normal mode – 2000H
Contrast Ratio	1200:1
Image Size	30 - 200 inches diagonal
Keystone Correction	± 15° vertical
Projection Distance	HT410: 3.6-28.5ft, 1.1-8.7m HT510: 2.9-23.9ft, 0.90-7.3m
Projection Angle	Minimum lens shift: TELE: 5.5°, WIDE: 6.5° Maximum lens shift: TELE: 13.6°, WIDE: 16.0°

Electrical

Inputs	1 3-RCA Component, 1 S-Video, 1 Video, 1 RGB, 1 L/R RCA Audio, 1 Stereo Mini Audio
Control	1 PC Control
Video Compatibility	NTSC, NTSC4.43, PAL, PAL-M, PAL-N, PAL-60, SECAM, HDTV: 1080i, 720p, SDTV: 576p, 480p
Scan Rate	Horizontal: 15 to 100 kHz (RGB: 24 kHz to 100kHz); Vertical: 50 to 85 Hz
Video Bandwidth	RGB 80 MHz
Pixel Clock Freq	110MHz
Color Reproduction	16.7 million colors simultaneously, Full color
Horizontal Resolution	NTSC, NTSC4.43, PAL/PAL-M/PAL-N/PAL-60 – 540 TV lines SECAM - 300 TV lines, Y/Cb/Cr – 540 TV lines RGB - HT410: 854dots (H) x 480dots (V); HT510: 1024dots (H) x 576dots (V)
External Control	RS232 (AMX, Crestron or Extron compatible)
Sync Compatibility	Separate Sync / Composite Sync / Sync on G
Built-in Speaker	1W monaural
Fan Noise	Eco-Mode: 26dB; Normal mode: 28dB
Power Requirements	100-240VAC, 50/60Hz
Input Current	2.2A-1.1A (100-240 VAC)
Power Consumption	204W Normal mode; 162W Eco-mode

Mechanical

Installation	Orientation: Floor/Front, Floor/Rear, Ceiling/Front, Ceiling/Rear
Dimensions (WxHxD)	7.36x5.24x13.60", 187x133x345mm (including protrusions)
Net Weight	6.6 lb. (3.0 Kg)
Environment	Operational Temp. 41° to 95°F / 5° to 35°C Humidity: 20-80% non-condensing Storage: 14° to 122°F / -10° to 50°C
Regulations	USA UL 60950 FCC Class B; Canada CSA60950 (C-UL); Mexico NOM-001-SCFI-1993
Accessories	Users manual, backlit wireless remote control, component video cable, s-video cable, composite video cable, D-sub signal cable, audio cable, power cable, carrying bag, quick connect guide and registration card
Warranty	Registered owners receive a 2-year limited, parts and labor warranty including RepairCare™. RepairCare provides the original owner with limited 3 business day repair and return. The lamp when used under normal operating conditions is covered for 500 hours or 3 months, whichever comes first.

Product/Accessories

Order Code	Description
HT510	16:9 native 576p, 1024x576 DLP home entertainment projector
HT410	16:9 native 480p, 854x480 DLP home entertainment projector
HT40CM	Ceiling mount kit for HT410 and HT510
LH01LP	Replacement lamp for HT410 and HT510
ADP-CV1	Component video adapter

Other HT Home Entertainment Product/Accessories

Order Number	Description
HT1100	3500:1 contrast ratio, 576p 1024x576 DLP home entertainment projector
HT169-Lens	Optional anamorphic lens for full panel resolution at 16:9 display for HT1100
LT60LPK	Replacement lamp for HT1100
LT60CM	Ceiling mount kit for HT1100
ATAPRO200	ATA shipping case for HT1100
TRAVELPRO200	Executive faux leather rolling case for projector and laptop for HT1100



For more information, call 800.632.4636 or visit www.necvisualsystems.com

NEC is a registered trademark of NEC Corporation. All other trademarks are the property of their respective owners. All specifications and programs are subject to change without notice. ©2004 NEC Solutions (America) Inc.

NEC Solutions (America), Inc.
Visual Systems Division
1250 Arlington Heights Rd., Suite 400
Itasca, IL 60143-1248

Empowered by Innovation

