

PowerLite[®] 17 Series

S17

SVGA Resolution

X17

XGA Resolution

W17

WXGA Resolution



W17 shown

Budget-friendly projectors built for today's classroom

3x Brighter Colors¹, and reliable performance — 3LCD, 3-chip technology

One measurement of brightness is not enough — look for both high color brightness and high white brightness. The PowerLite S17, X17 and W17 have:

Color Brightness — 2700 to 2800 lumens²

White Brightness — 2700 to 2800 lumens²

Impressive image quality — available in native SVGA, XGA and WXGA (widescreen) resolutions

HDMI digital connectivity — up to HD quality video and audio with just one cable

Wireless — project from your iPhone[®], iPad[®] and Android[™] mobile devices with the Epson iProjection[™] App (requires optional wireless LAN module)

Long-lasting lamp — up to 6000-hour lamp life³

Easily engage your students — built-in 5 W speaker; or, use external speakers, even in Standby Mode





Budget-friendly projectors built for today's classroom

Featuring great connectivity and amazing image quality, these high-value classroom projectors are the ideal tool for presenting impactful lessons — all at an affordable price. Offering 3x Brighter Colors¹ than competitive models, Epson 3LCD projectors ensure bright, vivid images. Available in SVGA, XGA and widescreen WXGA resolutions, this series includes HDMI connectivity to easily bring high-quality video, plus audio, into any learning environment. The PowerLite S17, X17 and W17 even offer an optional wireless module to project content from popular mobile devices. Reliable, easy to use, and always impressive, they are the budget-friendly choices for virtually any classroom.



Optional
Wireless
Connectivity

Series at a glance



GOOD

PowerLite S17

- Color brightness: 2700 lumens²
- White brightness: 2700 lumens²
- SVGA resolution (800 x 600)



BETTER

Step up to PowerLite X17

- Color brightness: 2700 lumens²
- White brightness: 2700 lumens²
- XGA resolution (1024 x 768)
- 1.2x optical zoom



BEST

Step up to PowerLite W17

- Color brightness: 2800 lumens²
- White brightness: 2800 lumens²
- WXGA widescreen resolution (1280 x 800)

Amazing image quality



PowerLite S17/X17

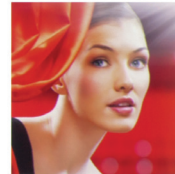


PowerLite W17

3x Brighter Colors with Epson¹

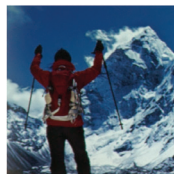
Brilliant image quality requires high color brightness (color light output), and Epson 3LCD projectors have 3x Brighter Colors than leading competitive projectors.¹

One brightness measurement (lumens) is not enough. A projector's specification needs to show both high color brightness and high white brightness. If color brightness is lower than white brightness, images may be dark, dull and lose detail. If not provided, be sure to ask for a projector's color brightness specification.



EPSON

High color brightness and high white brightness



COMPETITOR

Color brightness significantly lower than white brightness

Actual photographs of projected images from an identical signal source. Price, resolution and white brightness are similar for both projectors (Epson 3LCD and 1-chip DLP competitor). Both projectors are set to their brightest mode.



3LCD – The #1 projection technology in the world

- All 3LCD projectors have both high color brightness and high white brightness
- All 3LCD projectors have 3 chips
- 25% lower power consumption for lower energy costs⁴
- 20 years of road-tested reliability



Remarkable resolution for brilliant clarity and detail

Resolution defines the level of detail and depth you'll see in a projected image. It's measured as the number of pixels wide by the number of pixels high. The more pixels, the better the detail.



SVGA (800 x 600)

Meets basic projection needs

XGA (1024 x 768)

Ensures sharper detail

WXGA (1280 x 800)

Offers high-definition and is ideal for widescreen (16:10) displays

Easy to share



Free Epson
iProjection App

Share from your tablet or smartphone

(optional wireless LAN module required)

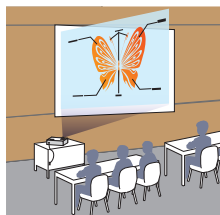
Display from your iOS or Android mobile device with the free Epson iProjection App and any nearby wireless Epson projector.

- Control your presentation with just a touch of the screen
- Advance through PowerPoint® or Keynote presentations
- Zoom in and out of PDF, Excel® and Word® documents
- Project web pages and view brilliant, high-quality images

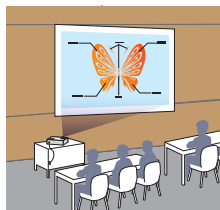


Easy to use

Flexible positioning



Without
horizontal keystone



With horizontal keystone

Simple Setup Suite from Epson

Epson projectors offer a suite of innovative features that ensure flexible placement and fast, easy setup.

- **HDMI connectivity** Get both audio and brilliant video quality with just one cable. Compatible with the latest laptops, Blu-ray® and media players.
- **Easy image adjustments** Position your projector almost anywhere and still get a correctly proportioned image, with keystone correction and easy-slide controls.
- **Quick Corner®** This innovative feature allows you to move any of the four corners of an image independently, to adjust each corner for a perfectly rectangular picture.
- **Convenient lens control** Optimize the image size whether your projector is close to the screen or far away, with the 1.2x optical zoom lens (X17 and W17 only).
- **USB Plug 'n Play instant setup** Instantly project audio and video from a PC or Mac® via a USB connection.
- **Quick, convenient control** Instant Off® means no cool-down time required; it's ready to shut down when you are.

Built-in closed captioning



- Helps meet ADA 508 requirements for students with hearing impairments
- No need to pay for an additional decoder and its installation

Save energy and more

Energy-efficient, long-life lamp

- Epson lamps maximize viewing time while minimizing the total cost of ownership
- Epson's unique lamp design saves energy — lamp lasts up to 6000 hours³
- Replacement lamps available at a low cost



 Energy saving features right at your fingertips

Easily conserve power

- **ECO mode** — operates the projector in a lower brightness setting
- **Sleep Mode (A/V Mute)** — control your presentation; it's right at your fingertips
- **Direct Power Off/On** — power the projector on/off with the flip of a wall switch
- **Standby audio out** — continue to pass audio out to an external speaker and play your audio even when the projector is "off" (in Standby Mode)
- **Standby microphones** — use a connected wired or wireless microphone, amplified through the built-in speakers, even while the projector is in Standby Mode
- **Schedule function** — control the projector at non-networked venues; the embedded "clock" inside the projector enables it to schedule tasks without having the "Network Standby Mode" on

PowerLite 17 Series 3LCD Projectors S17/X17/W17

Specifications

Projection System 3LCD, 3-chip technology
Projection Method Front/rear/ceiling mount
Driving Method Poly-silicon TFT Active Matrix
Pixel Number
 S17: 480,000 dots (800 x 600) x 3
 X17: 786,432 dots (1024 x 768) x 3
 W17: 1,024,000 dots (1280 x 800) x 3
Color Brightness² Color Light Output
 S17/X17: 2700 lumens
 W17: 2800 lumens
White Brightness² White Light Output
 S17/X17: 2700 lumens
 W17: 2800 lumens
Aspect Ratio S17/X17: 4:3, W17: 16:10

Native Resolution

S17: 800 x 600 (SVGA)
 X17: 1024 x 768 (XGA)
 W17: 1280 x 800 (WXGA)

Resize

640 x 480 (VGA), 800 x 600 (SVGA/X17 and W17 only), 1024 x 768 (XGA/S17 and W17 only), 1280 x 800 (WXGA/ S17 and X17 only), 1280 x 960 (SXGA2), 1280 x 1024 (SXGA3), 1366 x 768 (WXGA60-3), 1400 x 1050 (SXGA+), 1440 x 900 (WXGA+), 1680 x 900 (WXGA++/X17 and W17 only), 1600 x 1200 (UXGA60/X17 and W17 only)

Lamp Type

200 W UHE
Lamp Life³
 Up to 6000 hours (ECO Mode)
 Up to 5000 hours (Normal Mode)

Throw Ratio Range

S17: 1.45 (Zoom:Wide), 1.96 (Zoom:Tele)
 X17: 1.48 (Zoom:Wide), 1.77 (Zoom:Tele)
 W17: 1.30 (Zoom:Wide), 1.56 (Zoom:Tele)

Size (projected distance)

S17: 30" to 350" (0.76 to 8.89 m)
 X17: 30" to 300" (0.76 to 7.62 m)
 W17: 33" to 318" (0.83 to 8.07 m)

Keystone Correction

Vertical: ± 30 degrees (Automatic)
 Horizontal: ± 30 degrees (Slider)

USB Plug 'n Play

Projector is compatible with PC and Mac computers

Contrast Ratio

Up to 10,000:1

Color Reproduction

Up to 1 billion colors

Projection Lens

Type

Manual focus (S17/X17/W17)

F-number

1.44 (S17), 1.58 – 1.72 (X17/W17)

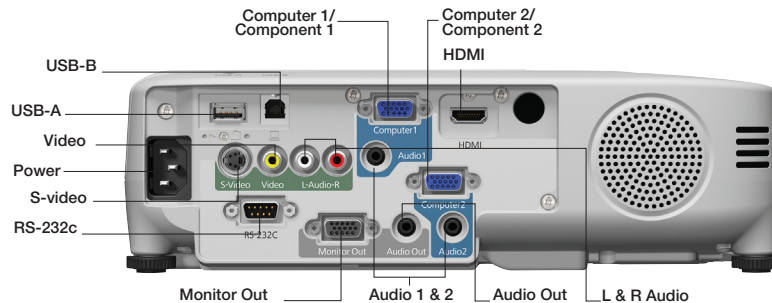
Focal Length

16.7 – 20.25

Zoom Ratio

Digital zoom 1.0 – 1.35 (S17),
 Optical zoom 1.0 – 1.2 (X17/W17)

Interfaces



Other

Display Performance NTSC: 480 lines PAL: 576 lines
 (Depends on observation of the multi-burst pattern)

Input Signal NTSC/NTSC4.43/PAL/M-PAL/N-PAL/PAL60/SECAM

Speaker 5 W (mono)

Operating Temperature 41 ° to 95 °F (5 ° to 35 °C)

Power Supply Voltage 100 – 240 V AC ±10%, 50/60 Hz

Power Consumption

283 W (Normal Mode)

234 W (ECO Mode)

2.9 W Standby (Communication On)

0.36 W Standby (Communication Off)

Fan Noise

37 dB (Normal Mode)

29 dB (ECO Mode)

Security Kensington®- style lock provision, padlock and security anchor bar

Dimensions (W x D x H)

Including feet 11.6" x 9.6" x 3.5"

Excluding feet 11.6" x 9.6" x 3.4"

Weight 5.6 lb (2.5 kg) (S17)/5.8 lb (2.6 kg) (X17/W17)

Remote Control

Features

Brightness, Contrast, Tint, Saturation, Sharpness, Input signal, Sync, Tracking, Position, Color temperature, Volume

Operating Angle

Right/left: ± 30 degrees

Upper/lower: ± 15 degrees

Operating Distance 19.7' (6 m)

Eco Features

RoHS compliant

Recyclable product⁶

Epson America, Inc. is a SmartWaySM Transport Partner⁷

Support

The Epson ConnectionSM

Pre-sales support

(U.S. and Canada): 800-463-7766

Internet website: www.epson.com

Service Programs

Two-year projector limited warranty, Epson Road Service program, PrivateLine[®] dedicated toll-free support and 90-day lamp limited warranty

What's In The Box

PowerLite S17, X17 or W17 projector, power cord, computer cable (VGA), projector remote control, batteries, user manual CD, Quick Setup Sheet, warranty card

Ordering Information

Product Name

PowerLite S17 projector

PowerLite X17 projector

PowerLite W17 projector

Accessories

Genuine Epson lamp (ELPLP78)

Replacement air filter (ELPAF32)

Wireless LAN module (ELPAP07)

Quick Connect USB key (ELPAP09)

Product Code

V11H568020

V11H569020

V11H573020

Product Code

V13H010L78

V13H134A32

V12H418P12

V12H005M09

1 Compared to leading 1-chip DLP business and education projectors based on NPD data, July 2011 through June 2012. Color brightness (color light output) measured in accordance with IDMS 15.4. Color brightness will vary depending on usage conditions.

2 Color brightness (color light output) and white brightness (white light output) will vary depending on usage conditions. Color light output measured in accordance with IDMS 15.4; white light output measured in accordance with ISO 21118.

3 ECO Mode is up to 6000 hours. Normal Mode is up to 5000 hours. Lamp life will vary depending upon mode selected, environmental conditions and usage. Lamp brightness decreases over time.

4 Data source: ProjectorCentral.com Jan. 2013. Average of 1128 shipping models for which the manufacturers provided lumens and total power data, all resolutions and brightness levels. Energy efficiency was measured as wattage per lumen. It was measured for both 3LCD and 1-chip projectors in each of five brightness segments. 3LCD projectors averaged less required electricity per lumen in each of the five segments.

5 Among people who had a preference, 9 out of 10 preferred images from 3LCD projectors over leading 1-chip DLP business and education projectors.

Leading projectors selected according to NPD data as of July 2013. Based on independent U.S. research conducted by Radius Research (July 2013).

6 See our website for convenient and reasonable recycling options at www.epson.com/recycle

7 SmartWay is an innovative partnership of the U.S. Environmental Protection Agency that reduces greenhouse gases and other air pollutants and improves fuel efficiency.

Better Products for a Better Future[™]
eco.epson.com



Epson America, Inc.
3840 Kilroy Airport Way, Long Beach, CA 90806

Epson Canada Limited
185 Renfrew Drive, Markham, Ontario L3R 6G3

www.epson.com
www.epson.ca

EPSON, Instant Off, PowerLite and Quick Corner are registered trademarks. EPSON Exceed Your Vision is a registered logomark and Better Products for a Better Future and Epson iProjection are trademarks of Seiko Epson Corporation. PrivateLine is a registered trademark. Built to Perform is a trademark and Epson Connection is a service mark of Epson America, Inc. iPad, iPhone and Mac are trademarks of Apple Inc., registered in the U.S. and other countries. SmartWay is a service mark of the U.S. Environmental Protection Agency. All other product and brand names are trademarks and/or registered trademarks of their respective companies. Epson disclaims any and all rights in these marks. Copyright 2013 Epson America, Inc. CPD-39697 9/13