

SPECIFICATIONS

Model	E2465-A	E2425W-A
Display Technology	Liquid Crystal Display	
Display Panel Type	LCX100ACP/ADP-6/7/8	
Display Panel	3x0.79"	3x0.75"
Brightness	5000 Ansi Lumens	4500 Ansi Lumens
Native Resolution	XGA (1024x768)	WXGA (1280x800)
Contrast Ratio	2000:1	
Projection Lens	1.6x optics, F=1.7 -2.2,f=21.3~34.16mm,1/4~16Digital zoom	
Uniformity	90%	
Throw Distance	30.2"~511.4"(30"~300")	31.9"~537"(30"~300")
Aspect Ratio	4:3 (Standard)/16:9(Compatible)	16:10 (Standard) / 4:3 (Compatible)
Keystone	Manual Keystone: V±30° H±15°	
Input	VGA*2,DVI*1,BNC*5,Video*1, S-video*1,YPbPr*1, Audio in(Mini Jack)*2, Audio in(L/R)*1, HDMI*2 DP*1, USB-A*1(JPEG readable), RJ45*1(display),USB-B*1(display)	VGA*2,DVI*1,BNC*5,Video*1, S-video*1,YPbPr*1, Audio in(Mini Jack)*2, Audio in(L/R)*1, HDMI*3 DP*1, USB-A*1(JPEG readable), RJ45*1(display), USB-B*1(display)
Output	VGA(INPUT2);Audio out	
Control	RS232*1/RJ45/USB-B(Share with input interface)	
PC Compatibility	VGA, SVGA, XGA, SXGA, WXGA, UXGA	
Video Compatibility	PAL/SECAM/NTSC/NTSC4.43/PAL-M/PAL-N 1080p/1080i/1035i/720p/576p/480p/576i /480i	
Lens Shift H	±10% (Powered)	
Lens Shift V	±50% (Powered)	
Lamp	275W	275W
Lamp Life	(STD Mode) 2000hours / (ECO Mode) 3000hours	
H-Synch Range	15-100KHz	
V-Synch Range	48-85Hz	
Standby Power	1W	
Power Consumption	385W	385W
Power Supply	100V – 240V @ 50~60Hz	
Operating Temp.	41°F ~ 95°F	
Storage Temp.	14°F ~ 140°F	
OSD Languages	17 languages: English,German, French, Italian, Spanish, Portuguese, Dutch, Swedish, Finnish, Hungarian, Romanian, Russian, Thai, Indonesian, Arabic, Turkish, Polish	
Speaker	1x10W	
Dimension	16" x 16.4" x 6.4"	
Weight	18.7 Lbs	
Standard Accessories	User Manual(CD), Lens Cover With String, Power Cord, Remote Control, VGA Cable, Warranty Card, Pass Card, Drying agent	
Other Features	<ol style="list-style-type: none"> 1. One Touch Lens Replacement 2. USB Display 3. Horizontal and Vertical Keystone 4. Triple Filter (Sponge / ESD) 5. Support Connection of Multiple Projectors 6. Quick Power off 7. Auto Focus 8. WIFI 	

* Product specifications are subject to change at any time without prior notice.

ASK Proxima



Professional Installation Projector



High Brightness



1.6x Standard Motorized Zoom Lens



Lens Shift



Video Wall



Professional Cooling System



Multiple I/O Interface



Easy Lens Replacement



E2465-A / E2425W-A

ASK Proxima
http://www.askproximaua.com



3848 Carson Street #220
Torrance, CA 90503
(855) 899-6825 Toll Free
(310) 316-6808 Fax

ASK, founded in 1984, originally conducted R&D in LCD technology for the production of LCD screens but later turned its focus towards developing overhead panels for projecting images in larger formats.

In 1991, Tandberg Data, a world leader in data storage products, assumed ownership of the firm, which rejuvenates ASK by turning its target to projector manufacture by collaborating with Polaroid under the label "For Polaroid - By ASK". The company undertook an aggressive marketing campaign, building a network of distributors in countries all over Europe and Asia.

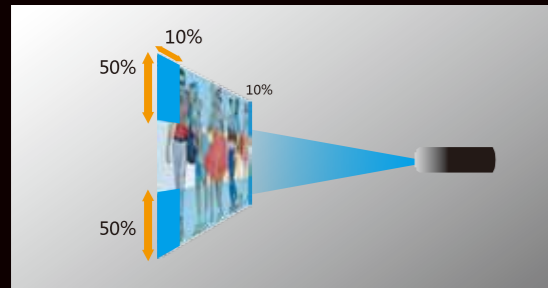
In 1998, to expand the market, ASK acquired its American competitor, Proxima Corporation. Later the company changed its name to Proxima ASA in 2000, and as of 2005, the company was the second largest in the projector industry. The year after, the company merged with the industry leader, InFocus Corporation.

In 2010, ASK Proxima went through another round of re-structuring and started to implement a new strategy to compete in the world market.



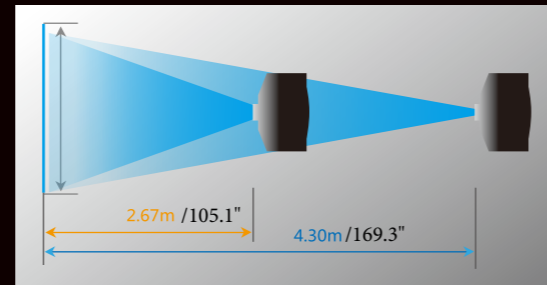
360° Lens Shift

Lens shift function—maximum 50% vertical shift and maximum 10% horizontal shift enables flexible installation.



1.6x Standard Digital Zoom Lens

Comparing with 1.2x lens, 1.6x lens can meet various installation requirements.



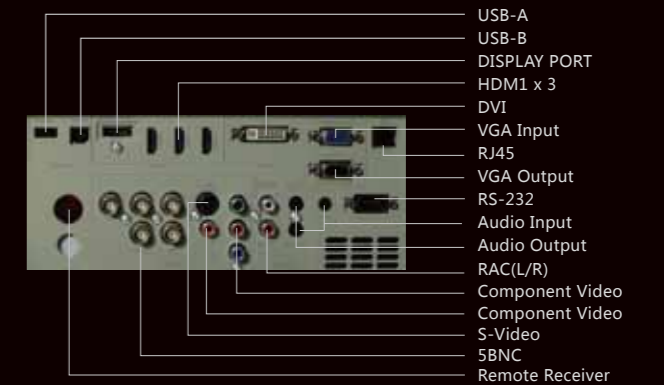
High Brightness for Large Image

4500-5000 Ansi lumen brightness is suitable for large venues, conference rooms and exhibition display.



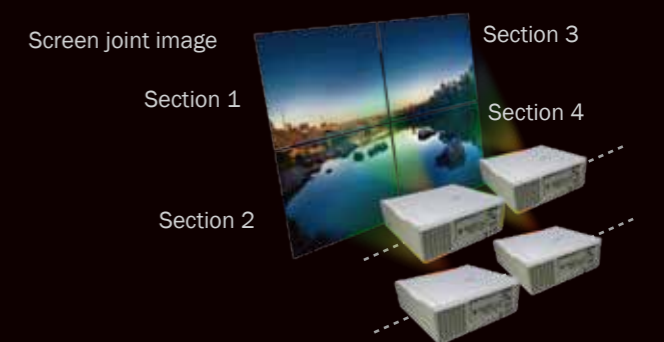
Multiple I/O Interface

Various I/O interface support multi-format peripherals.



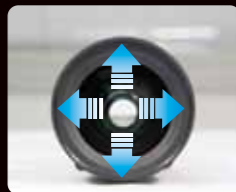
Unique Image Segmentation Joint Function

Joint of big images normally requires the combination of high end projectors and screen split equipments, the cost of which is high, and operation is complicated; However, ASK Proxima can automatically achieve big image joint with several units of projectors without the screen split equipment.



Motorized Lens Shift & Digital Zoom

Motorized lens shift can adjust image position without moving the projector.



Hybrid Filter

Detachable hybrid filters prevent the projector from fog and dust, convenient for cleaning and maintenance.

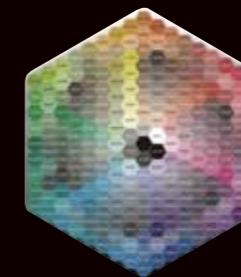


"Crystal Color" Image Processing Technology

This unique technology contributes to increase brightness, hue of primary colors and intermediate colors by improving gray scale and detail effects. Combined with 10 bit Gamma correction, it greatly elevates the contrast ratio and purity to present a more vivid and gorgeous image bringing enjoyment of theater visual effects to various venues.



Processed by "Crystal Color"



Unprocessed by "Crystal Color"



Processed by "Crystal Color"



Unprocessed by "Crystal Color"

Optional Lenses



Part No.	AP-LNS-W21	AP-LNS-W20	AP-STD	AP-LNS-S20	AP-LNS-T20	AP-LNS-T21
Type	Short Fixed lens	Short-zoom lens	Standard lens	Standard Zoom lens	Long-zoom lens	Ultra-long lens
Electric	YES	YES	YES	YES	YES	YES
Zoom/Focus	Fixed/Power	x1.3/Power	x1.6/Power	x1.7/Power	x1.6/Power	x1.6/Power
Focal length	13.05	20.4-27.6	21.3-34.1	27.7-45.5	45.6-73.8	73.9-117.1
F value	2	1.8-2.3	1.7-2.2	1.7-2.3	1.8-2.3	1.8-2.3
Throw Ratio	0.8:1	1.3-1.7:1	1.3-2.1:1	1.7-2.8:1	2.8-4.6:1	4.6-7.2:1
	80°@ 51.2"	80°@ 83.1"-108.7"	80°@ 83.1"-134.3"	80°@ 108.7"-179.1"	80°@ 179.1"-294.5"	80°@ 294.5"-460.6"
Lens shife	H	0%(Fixed)	±50%(approx)	±50%(approx)	±50%(approx)	±50%(approx)
	W	0%(Fixed)	±10%(approx)	±10%(approx)	±10%(approx)	±10%(approx)

Network Control

By wired connection to RJ45, the user can control or monitor all projectors in distance by on/off, configuration, viewing lamp time and operating status by entering corresponding IP through internet browser.

