

**EPSON**<sup>®</sup>  
EXCEED YOUR VISION

# ELITE PRO CINEMA PROJECTORS

---

Pro Cinema LS9600e | Pro Cinema LS10000





..... Innovative 4K Enhancement Technology<sup>1</sup>

..... Pro Cinema LS10000

## PREPARE TO BE AMAZED.

---

The ultimate home theater demands the ultimate projector. Bring a state-of-the-art movie theater experience to your home with Epson's groundbreaking Pro Cinema LS9600e and LS10000 projectors. Featuring revolutionary 3LCD Reflective laser projection technology, these high-definition projectors deliver phenomenal image quality and color brightness that elevates any screening to an enthralling cinematic experience.





Pro Cinema LS9600e

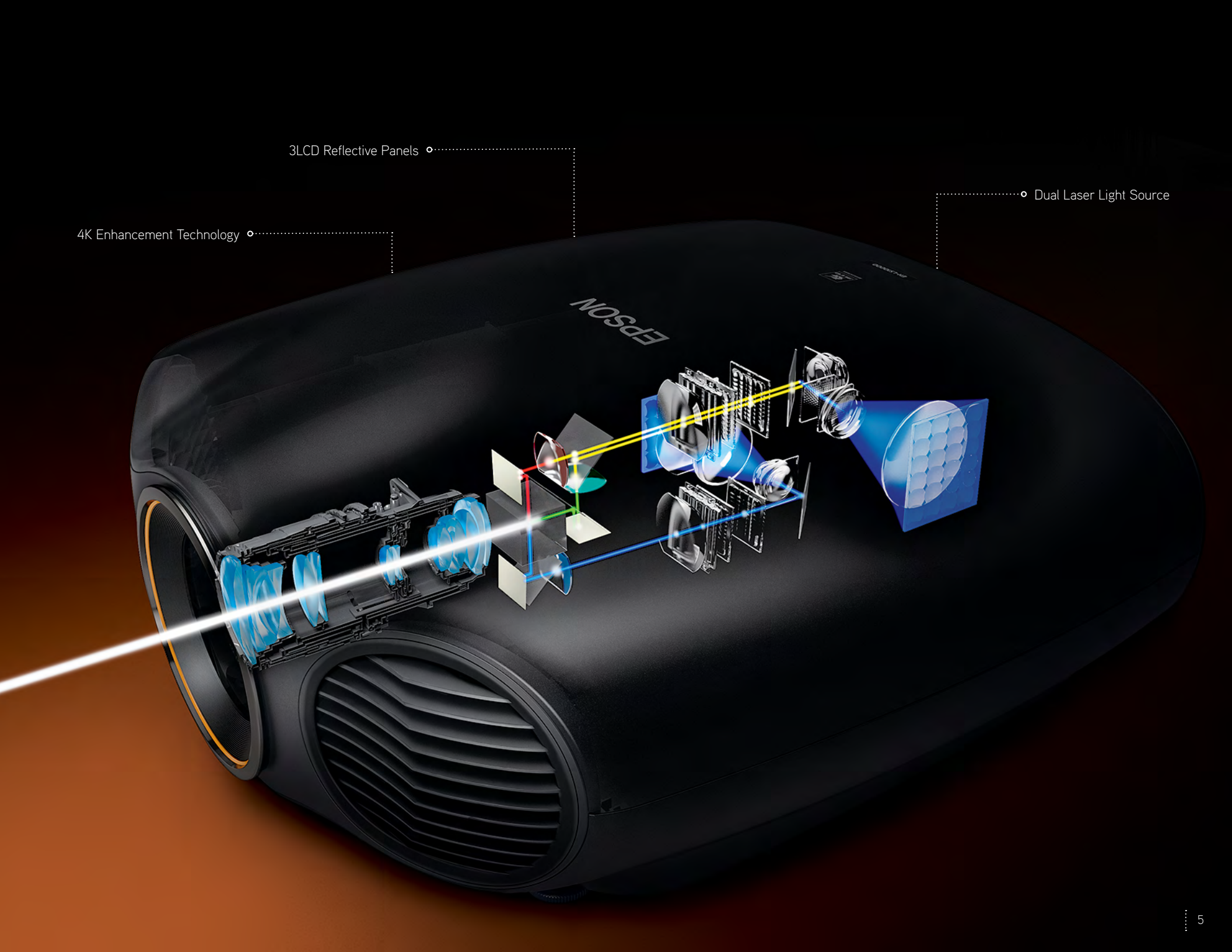
WirelessHD™ projection in 1080p

# EPSON® PRO CINEMA LIKE YOU'VE NEVER SEEN BEFORE.

---

Combining 3LCD Reflective panels and a dual laser light source, these projectors deliver the blackest blacks and bright, true-to-life colors with one of the widest color gamuts in the industry. With 4K Enhancement Technology<sup>1</sup> — available on the LS10000 — all of the subtleties that the filmmakers originally captured suddenly become visible in beautiful, crisp clarity. It's not just projection — it's Epson home theater perfection.





3LCD Reflective Panels

Dual Laser Light Source

4K Enhancement Technology



◦ Exceptional contrast for richer blacks and brighter whites.

## AT LAST, LASER PROJECTION COMES HOME.

Considering the advantages offered by a laser system, Epson's decision to use a laser light source for the LS9600e and LS10000 was an obvious choice. The laser light engine's long, 30,000-hour lifespan<sup>2</sup> provides virtually worry-free operation. And, there's no waiting for the projector to warmup or cool down — the projector reaches maximum brightness and turns off almost immediately. Plus, high-speed contrast control ensures both bright and dark scenes look their best.

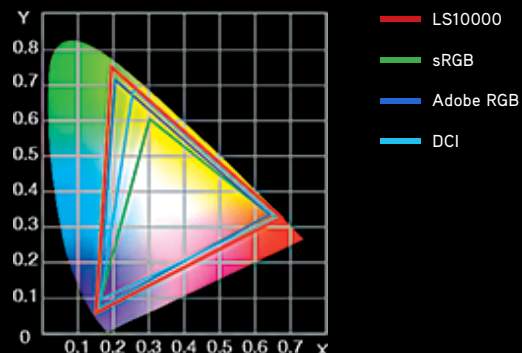
### DUAL LASER LIGHT SOURCE

The dual blue laser diode illumination system — one for red and green, the other for blue — ensures balanced, high-quality images.



### WIDE COLOR GAMUT

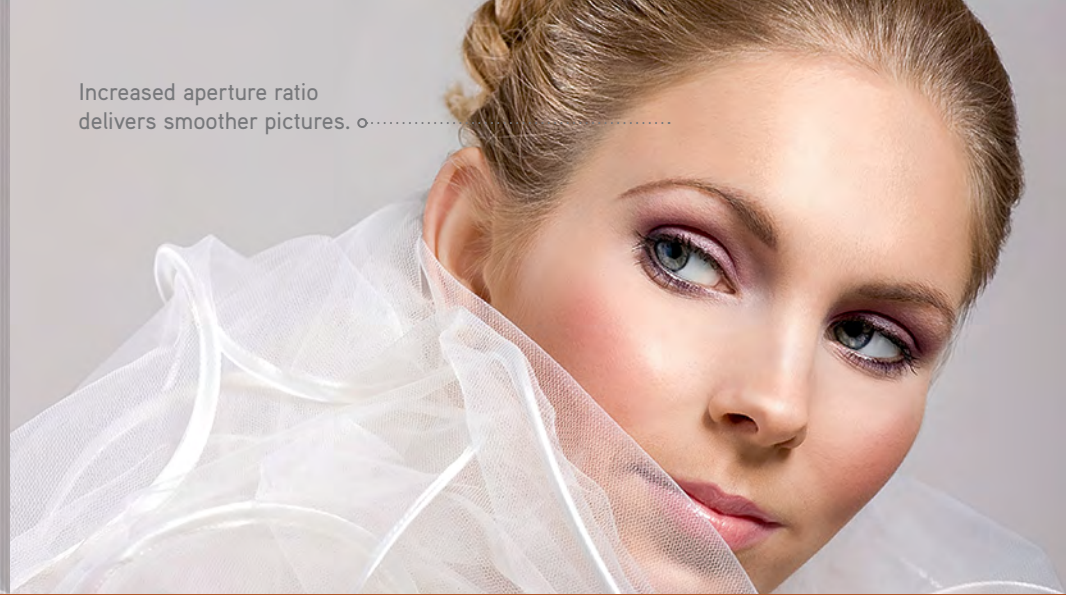
Enjoy brilliant, color-rich performance. The full sRGB color gamut is visible even in the brightest mode. And, the DCI color gamut — the digital cinema standard — is also achievable.







Increased aperture ratio delivers smoother pictures.



## NOW PLAYING: 3LCD REFLECTIVE TECHNOLOGY WITH ABSOLUTE BLACK.

For decades, 3LCD projectors have been praised within the industry for delivering superior color and gradation. Now, with Epson's innovative 3LCD Reflective system, you get remarkably high contrast as well. Featuring advanced liquid crystal on quartz technology, these 3LCD Reflective projectors boast exceptional performance, including an improved pixel density and increased aperture ratio for smoother, film-like pictures.

### ABSOLUTE BLACK CONTRAST RATIO

Experience incredible, unprecedented black levels — with zero lumens during Absolute Black scenes.



Up to 1500 lumens<sup>3</sup>

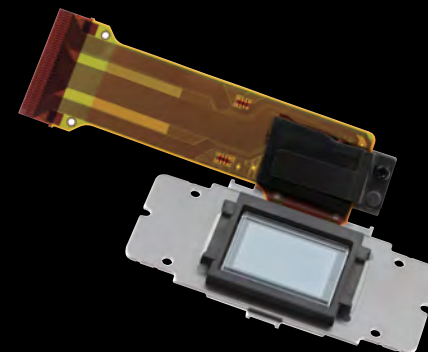
Ultra high contrast

Zero lumens in Full Black



### 3LCD REFLECTIVE PANELS

Light reflection reduces and corrects the variation of polarization, delivering rich, deep blacks.







Step into the picture.



Get wrapped up in the details.

## EXPERIENCE STUNNING 4K ENHANCEMENT.

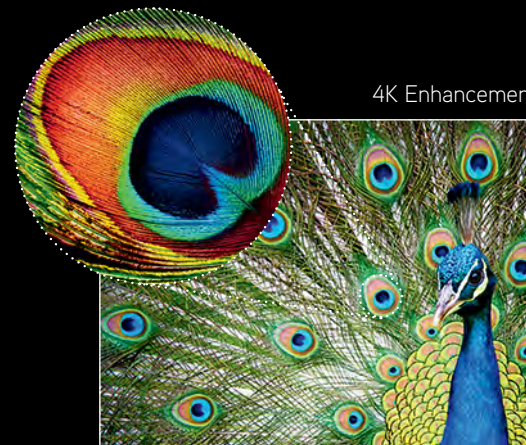
Discover a whole new way to watch movies — the way filmmakers intended. Available on the LS10000, Epson's 4K Enhancement Technology<sup>1</sup> delivers astonishing picture quality. Now, every subtle intricacy is captured — even your most-loved films will offer something new. Plus, Epson's Super-resolution with Detail Enhancement Technology refines surface details for true-to-life images that pop off the screen. Users can adjust levels of sharpness and detail enhancement for optimal viewing. This isn't just a new way to watch movies — it's the best way.

### 4K ENHANCEMENT TECHNOLOGY

4K Enhancement makes standard and HD content come alive. From the feathers in a plume to freckles on a nose, you'll see every incredible detail.

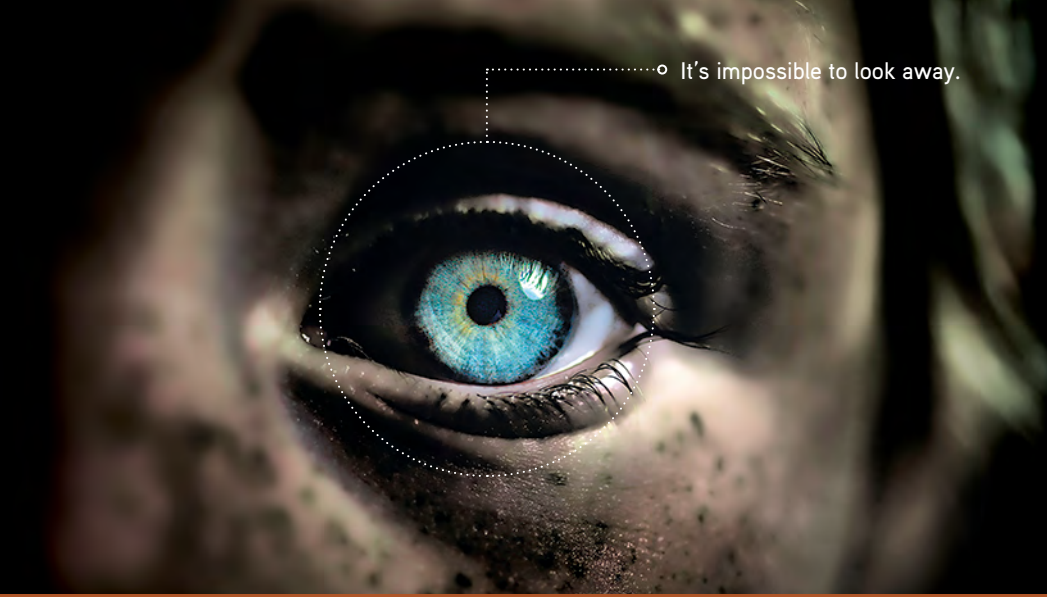


Full HD

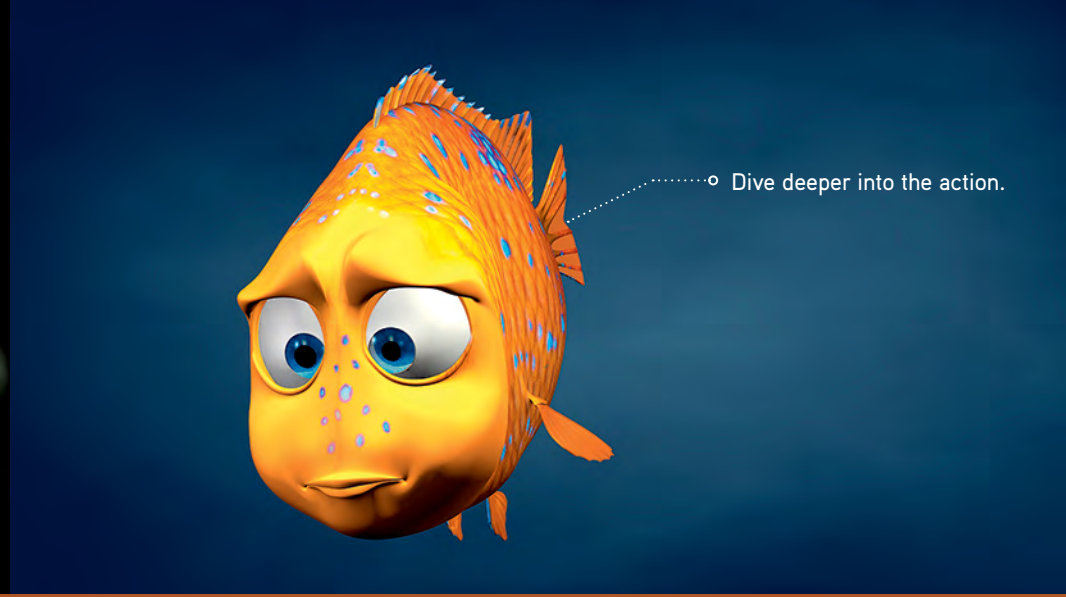


4K Enhancement





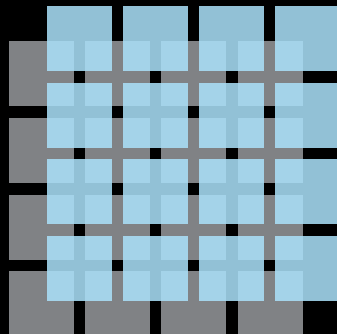
◦ It's impossible to look away.



◦ Dive deeper into the action.

### PIXEL SCALING

Epson's revolutionary 4K Enhancement Technology shifts each pixel diagonally by 0.5 pixels for twice the vertical and horizontal resolution.



### FRONT-ROW SEATS TO THE ACTION

Enjoy unbelievable sharpness and clarity, even closer to the screen. 4K Enhancement delivers immersive images.





Picture-perfect gradations.



Image quality that will blow you away.

## WITNESS HOME CINEMA IN A WHOLE NEW LIGHT.

When it came to designing the LS9600e and LS10000 projectors, Epson's engineers focused on a singular goal: achieving the best possible image quality, for an unbelievable home theater experience. Unlike laser projectors that are intended for business or commercial settings — where brightness is the priority — these projectors were designed to deliver higher contrast and more natural color expression. The result is projectors that are capable of Absolute Black like you've never seen, as well as smooth, dark gradations and finely-tuned colors.

### COLOR MODES

Choose from an array of color modes for an optimized viewing experience. Color modes include Dynamic, B&W Cinema, 3D Cinema, 3D THX and more.



### RELIABLE PERFORMANCE

Enjoy fast, reliable projection from a constant beam of light. The laser light source delivers images that are more stable.







Darker moments come alive. ◦



Find yourself in a sea of color. ◦

Projected screen images are simulated.

### **FINELY-TUNED COLOR**

The laser light source means the correct color gamut is fully realized at all times.

### **THX® CERTIFICATION**

Expect accurate picture quality and exceptional performance.

### **ISF® CALIBRATION**

Exceptional video performance with ISF Calibration tools.



# PICTURE-PERFECT, PROVEN 2D & 3D TECHNOLOGIES.

Whether you're watching a cinema classic or the latest 3D blockbuster, the advanced projection features on the LS9600e and LS10000 deliver standout performances. These innovations include Epson's unique Super-resolution with Detail Enhancement Technology, exceptional frame interpolation capabilities, as well as powerful Bright 3D Drive projection. Experience a new standard in home entertainment.

## SUPER-RESOLUTION WITH DETAIL ENHANCEMENT

Super-resolution defines edges for standard and HD content, while Detail Enhancement refines surface detail for true-to-life images.



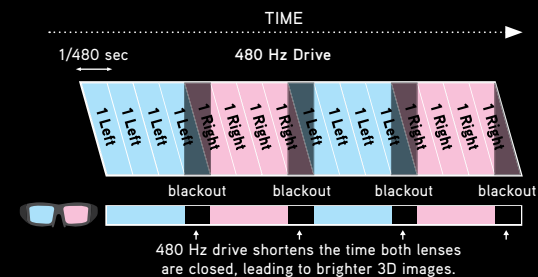
## FRAME INTERPOLATION

Frame interpolation technology inserts multiple new frames between the original ones, so motion appears smoother, sharper and more realistic.



## BRIGHT 3D DRIVE

Bright 3D Drive Technology doubles the image refresh rate from 240 Hz to 480 Hz and reduces the blackout time of 3D glasses to provide greater brightness when viewing 3D content.





# POWERFUL INNOVATION IN AN ELEGANT PACKAGE.

Elegant body. Bold, glamorous curves. Textured black surface. These features are all part of a premium product that's packed with innovation and power. Every inch of these projectors has been considered. There's no wasted space — and no exposed cables. Even the dark, matte finish of the LS9600e and LS10000 is itself an innovation: It's not just beautiful to look at, but it absorbs light, too.



# TOTAL RECALL: POWERED LENS POSITION MEMORY.

Fast, quiet and precise, the LS9600e and LS10000 allow you to preset up to 10 positions for zoom, focus and lens shift for both standard projection and wide cinema ratios. Project 2.40, 2.35, 1.85 and 1.78 aspect ratios on the same screen without an anamorphic lens — and no downtime when switching between ratios. Watch movies on a grander scale at the touch of a button, without any disruptive black bars.

16:9



2.40:1 movie on a 16:9 screen

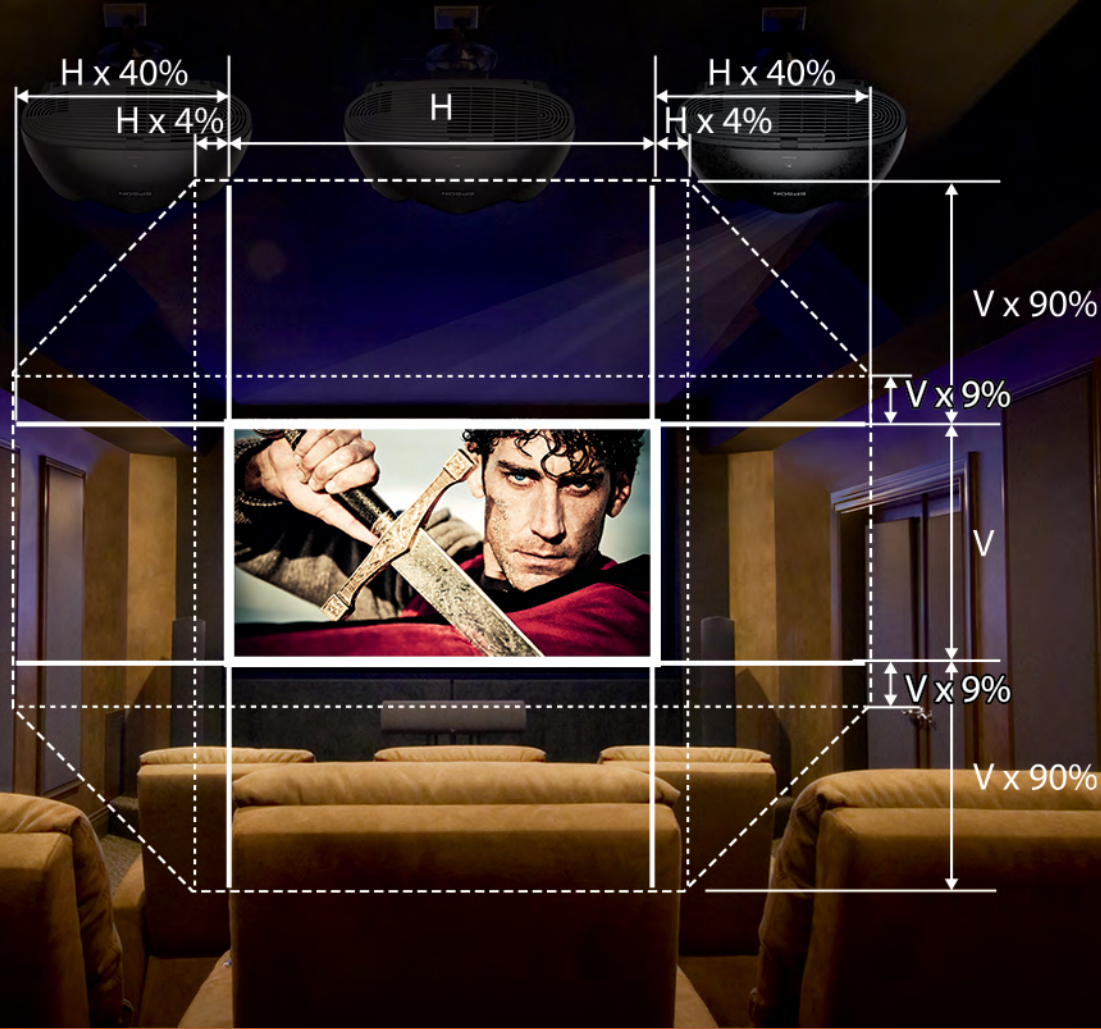
2.40:1



2.40:1 movie on a 2.40:1 screen







## DESIGNED FOR EXTRAORDINARY INSTALLATION FLEXIBILITY.

In addition to added reliability and amazing color performance, Epson's advanced projection technology enables a wide range of lens shift capabilities for outstanding installation flexibility. The LS9600e and LS10000 each have an incredible range of up to  $\pm 90$  percent on the vertical axis and up to  $\pm 40$  percent on the horizontal axis. Users can operate the lens shift functions using the remote control, the projector control panel, or control commands.

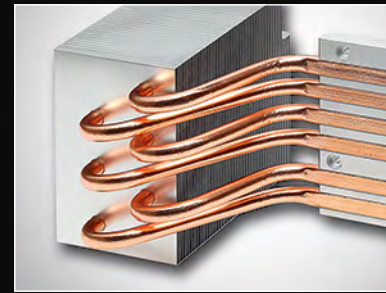
# A PERFORMER THAT'S THE STRONG, SILENT TYPE.

When it comes to home cinema, you want to focus on what's in front of you — and nothing else. That's the idea behind the innovative, efficient cooling system of the LS9600e and LS10000. With noise levels as low as 19 dB, these are among the quietest projectors in the industry. It's time to enjoy engaging cinema without distraction — all the better for those moments when the picture takes your breath away.



## COOLING EFFICIENCY

A whisper-quiet fan that's so silent, you won't even notice there's a projector in the room.



## PREMIUM COMPONENTS

The projectors feature thermal-conductive copper piping to help dissipate heat.





# PRACTICAL FUNCTIONALITY, CONVENIENT CONNECTIVITY.

Take the trouble out of troubleshooting with enriched network functionality and convenient hands-free features that make servicing the projector easier than ever before. Dealer representatives can securely and remotely monitor the projector's status to address issues that may arise. There is even an email notification function that can send status alerts to a designated recipient.



## WIRELESSLY TRANSMIT HD CONTENT

Wirelessly project Full HD 1080p. The transmitter supports up to five HDMI® devices. (LS9600e only)

## DUAL HDMI CONNECTIVITY

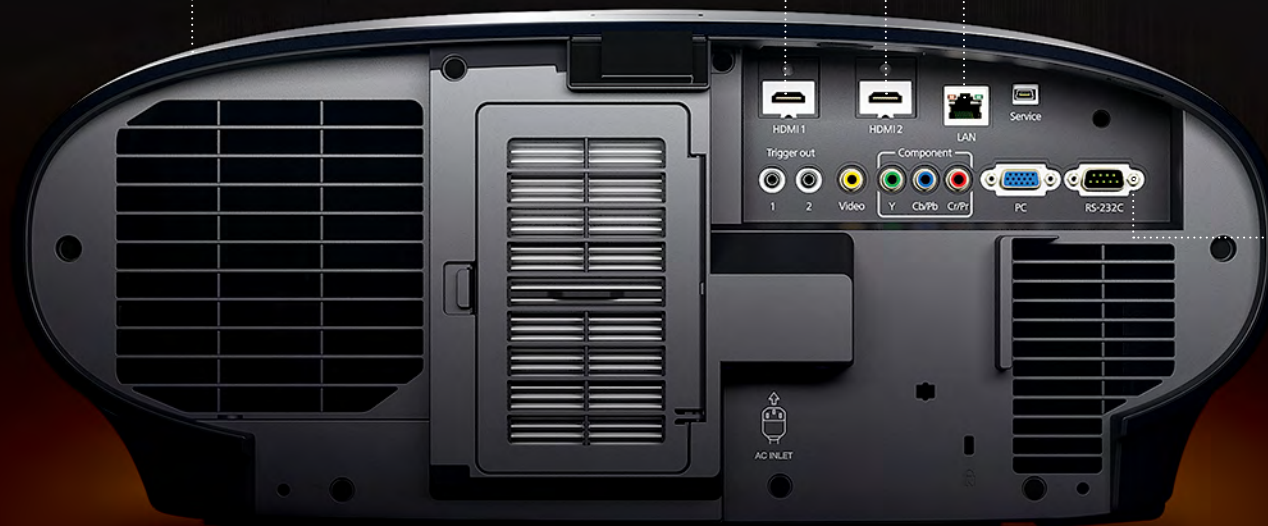
Simultaneously connect up to two different HDMI devices directly to the projector. (Includes one HDMI HDCP2.2 port)

## LAN/ETHERNET PORT

Provides automatic email notifications should problems arise.

## HOME AUTOMATION INTEGRATION

Easily integrate the projector with home automation systems through the RS-232c port.





Elite Pro Cinema Projection



## SPECIFICATIONS

### LS10000

### LS9600e

Projection System	3LCD Reflective, 3-chip technology Poly-silicon TFT active matrix	3LCD Reflective, 3-chip technology Poly-silicon TFT active matrix
Projection Methods	Front / rear / ceiling mount	Front / rear / ceiling mount
Driving Method	Epson Poly-silicon TFT active matrix, 0.74-inch wide panel Reflective HTPS	Epson Poly-silicon TFT active matrix, 0.74-inch wide panel Reflective HTPS
Projected Output	HD, 2D, 3D, 1080p	HD, 2D, 3D, 1080p
Pixel Number	2,073,600 dots (1920 x 1080) x 3	2,073,600 dots (1920 x 1080) x 3
Color Brightness <sup>3</sup> (Color Light Output)	1500 lumens	1300 lumens
White Brightness <sup>3</sup> (White Light Output)	1500 lumens	1300 lumens
Aspect Ratio	Native 16:9 widescreen (4:3 resize), compatible with 4:3 and 2.35:1 video formats with Normal, Full or Zoom Modes	Native 16:9 widescreen (4:3 resize), compatible with 4:3 and 2.35:1 video formats with Normal, Full or Zoom Modes
Native Resolution	Native 1080p (1920 x 1080)	Native 1080p (1920 x 1080)
Laser Type	Laser Diode 41.9 mW (Output)	Laser Diode 33.7 mW (Output)
Light Source Life <sup>2</sup>	Up to 30,000 hours (ECO Mode)	Up to 30,000 hours (ECO Mode)
Size (projected distance)	100" diagonal (wide: 9.3' – tele: 19.8')	100" diagonal (wide: 9.3' – tele: 19.8')
Contrast Ratio	Absolute Black (Full White 1500 lm / Full Black 0 lm)	Absolute Black (Full White 1300 lm / Full Black 0 lm)
Projection Lens Type	Powered optical zoom / Powered focus	Powered optical zoom / Powered focus
F-Number	2.5 – 3.7	2.5 – 3.7
Focal Length	21.3 mm – 44.7 mm	21.3 mm – 44.7 mm
Zoom Ratio	1 – 2.1	1 – 2.1
Powered Lens Shift	Vertical: 90% max (up and down with horizontal centered) Horizontal: 40% max (left and right with vertical centered)	Vertical: 90% max (up and down with horizontal centered) Horizontal: 40% max (left and right with vertical centered)
Lens Cover	Powered, slide lens shutter	Powered, slide lens shutter
Lens Iris	Fine adjustments	Fine adjustments
Lens Position	The following 3 items are saved in memory: Lens Shift Position, Zoom Position, Focus Position	The following 3 items are saved in memory: Lens Shift Position, Zoom Position, Focus Position
Memory Positions	10 (Memory 1 – 10)	10 (Memory 1 – 10)
Display Performance	1920 x 1080 native 1080p; HD, 2D, 3D, 2D to 3D conversion	1920 x 1080 native 1080p; HD, 2D, 3D, 2D to 3D conversion
Aspect Mode	Auto / Normal / Full / Zoom / Anamorphic Wide / Horizontal Squeeze	Auto / Normal / Full / Zoom / Anamorphic Wide / Horizontal Squeeze
Super-resolution / 4K Enhancement <sup>1</sup>	Off / 1 / 2 / 3 / 4 / 5 / 4K-1 / 4K-2 / 4K-3 / 4K-4 / 4K-5	Off / 1 / 2 / 3 / 4 / 5
Frame Interpolation	Off / Low / Normal / High (2D and 3D Mode)	Off / Low / Normal / High (2D and 3D Mode)
Color Modes	Dynamic, Living Room, Natural, THX, Cinema, B&W Cinema, Adobe RGB, Digital Cinema, 3D Dynamic, 3D Cinema, 3D THX	Dynamic, Living Room, Natural, THX, Cinema, B&W Cinema, 3D Dynamic, 3D Cinema, 3D THX
Input Signal HDMI	480i / 576i / 480p / 576p / 720p / 1080i / 1080p / 4K x 2K	480i / 576i / 480p / 576p / 720p / 1080i / 1080p
Terminal Inputs	2 HDMI (1 HDMI HDCP2.2), 1 RS-232c, 1 RCA (composite), 3 RCA (component), 1 VGA D-sub 15 pin (computer input), 1 Wired LAN (RJ45, 100 Mbps) for command and control only	2 HDMI (1 HDMI HDCP2.2), 1 RS-232c, 1 RCA (composite), 3 RCA (component), 1 VGA D-sub 15 pin (computer input), 1 Wired LAN (RJ45, 100 Mbps) for command and control only
WirelessHD Transmitter		Input: 5 HDMI Output: 1 HDMI, 1 Optical Audio (Stereo), 1 USB Type A (3D glasses charging)
Computer Compatibility	PC, Mac®	PC, Mac
Fan Noise	19 dB (4K Enhancement: Off)	19 dB
Power Supply Voltage	100 – 240 VAC ± 10%, 50/60 Hz	100 – 240 VAC ± 10%, 50/60 Hz
Power Consumption	100 – 120 VAC, Laser on 459 W, Laser on (ECO) 267 W Standby Mode, Communication: On 2.8 W / Off 0.29 W	100 – 120 VAC, Laser on 345 W, Laser on (ECO) 218 W Standby Mode, Communication: On 2.8 W / Off 0.29 W
Dimensions / Weight	21.65" x 21.77" x 8.85" (W x D x H), Weight: 39.7 lb	21.65" x 21.77" x 8.85" (W x D x H), Weight: 39.7 lb



**Better Products for a Better Future™**

[eco.epson.com](http://eco.epson.com)

**Epson America, Inc.**  
3840 Kilroy Airport Way, Long Beach, CA 90806

**Epson Canada Limited**  
185 Renfrew Drive, Markham, Ontario L3R 6G3

[www.epson.com](http://www.epson.com)  
[www.epson.ca](http://www.epson.ca)

1 4K Enhancement Technology shifts each pixel diagonally by 0.5 pixels to double the resolution to 3840 x 2160 and surpass Full HD image quality. Resolution is 1920 x 1080 in 3D Mode.

2 30,000 hours is the estimated projector life when used in ECO Mode. The projector comes with a three-year limited warranty, described in the warranty statement. Actual hours may vary depending on usage environment.

3 Color brightness (color light output) and white brightness (white light output) will vary depending on usage conditions. Color light output measured in accordance with IDMS 15.4; white light output measured in accordance with ISO 21118.

Caution: Class 2 laser product. Do not stare into the beam.

Specifications and terms are subject to change without notice. EPSON is a registered trademark, EPSON Exceed Your Vision is a registered logomark and Better Products for a Better Future is a trademark of Seiko Epson Corporation.

Mac is a trademark of Apple Inc., registered in the U.S. and other countries. All other product and brand names are trademarks and/or registered trademarks of their respective companies. Epson disclaims any and all rights in these marks.

Copyright 2014 Epson America, Inc. CPD-40907 8/2014